

EXHIBIT 3

Summer Travel Map with the Forest Service's Position on Remedy based on the Summer Travel - Map 5 Record of Decision Little Belt, Castle & North Half Crazy Mountain Ranges

Preparation Date: June 14, 2010 1400 km

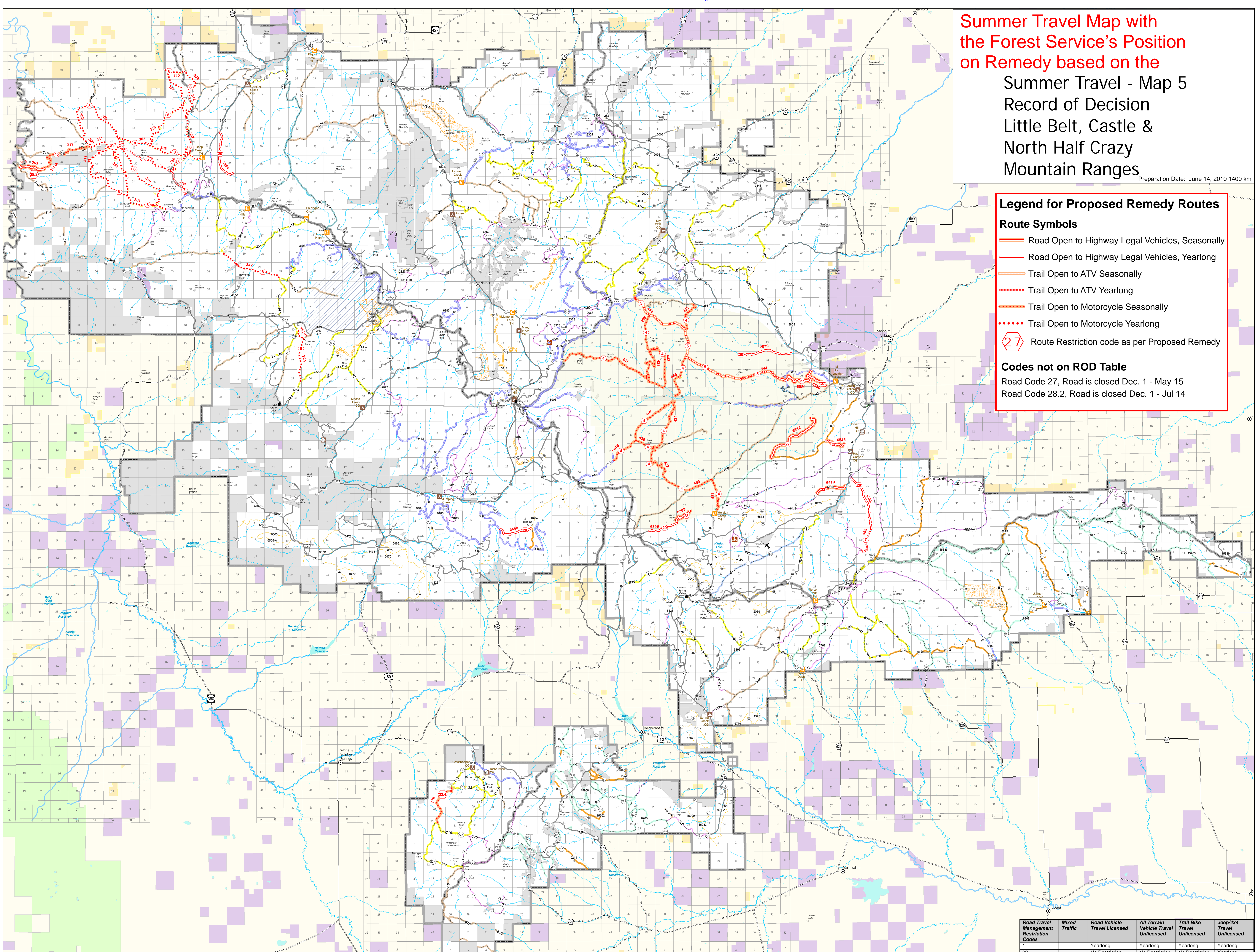
Legend for Proposed Remedy Routes

Route Symbols

- Road Open to Highway Legal Vehicles, Seasonally
- Road Open to Highway Legal Vehicles, Yearlong
- - - Trail Open to ATV Seasonally
- - - Trail Open to ATV Yearlong
- - - Trail Open to Motorcycle Seasonally
- - - Trail Open to Motorcycle Yearlong
- 27 Route Restriction code as per Proposed Remedy

Codes not on ROD Table

- Road Code 27, Road is closed Dec. 1 - May 15
- Road Code 28.2, Road is closed Dec. 1 - Jul 14



Legend

- ✕ Proposed Airfield
- Trails With All Terrain Vehicle Travel
- Trails With Motorcycle Travel
- Trails With Foot Travel Only
- Non-Motorized Trails
- Alternating Types of Travel
 - ATV, Motorcycle, Jeep, 4x4 Open Yearlong
 - ATV, Motorcycle, Jeep, 4x4 Open Seasonally
- New Trail Construction/Reconstruction**
 - Trails With All Terrain Vehicle Travel
 - Trails With Motorcycle Travel
 - Non-Motorized Trails
- Roads:**
 - Public Roads
 - Roads Open Yearlong
 - Roads Open Seasonally
 - Mixed Traffic Open Yearlong
 - Mixed Traffic Open Seasonally

Ownership

- Bureau of Land Management
- Private Land within the Forest Boundary
- State Lands
- Private Land Outside Forest Boundary
- Other USFS
- Wilderness Study Area
- Research Natural Areas
- Tenderfoot Experimental Forest
- District Boundary

Proposed Youth Loops

Youth Loops - Small area of several acres, either contained by fencing or clearly marked boundary, with short, tight trail system that is designed to entertain kids under adult supervision. The youth loop offers an alternative to unauthorized routes near camp areas and riding in campgrounds.

Disclaimer:
The Forest Service uses the most current and complete data available. GIS data and product accuracy may vary. They may be developed from sources of differing accuracy, accurate only at certain scales, based on modeling or interpretation, incomplete while being created or revised, etc. Using GIS products for purposes other than those for which they were created, may yield inaccurate or misleading results. The Forest Service reserves the right to correct, update, modify or replace GIS products without notification. For more information contact:
Lewis & Clark National Forest
1101 15th St N, Box 869
Great Falls, Montana 59403
406-791-7700

Miles
0 1 2 4 6 8

The Road and Trail data sets are being revised/updated, and will be edited without notification.

Road Travel Management Restriction Codes	Mixed Traffic	Road Vehicle Travel Licensed	All Terrain Vehicle Travel Unlicensed	Trail Bike Travel Unlicensed	Jeep/4x4 Travel Unlicensed
1		Yearlong	Yearlong	Yearlong	Yearlong
20		No Restriction	No Restriction	No Restriction	No Restriction
20.1	Yes	No Restriction	No Restriction	No Restriction	No Restriction
21		Sep 01-Dec 01	Yearlong	Yearlong	Yearlong
21.0		Sep 01-Dec 01	Sep 01-Dec 01	Sep 01-Dec 01	Sep 01-Dec 01
22	Yes	Sep 01-Jun 30	Yearlong	Yearlong	Yearlong
23		Oct 15-Dec 01	Yearlong	Yearlong	Yearlong
23.0	Yes	Oct 15-Dec 01	Oct 15-Dec 01	Oct 15-Dec 01	Oct 15-Dec 01
24		Oct 15-May 15	Yearlong	Yearlong	Yearlong
26		Dec 01-Jun 01	Yearlong	Yearlong	Yearlong
26.0	Yes	Dec 01-Jun 01	Dec 01-Jun 01	Dec 01-Jun 01	Dec 01-Jun 01
28		May 01-Jun 15	Yearlong	Yearlong	Yearlong
29		Oct 15-Jun 30	Yearlong	Yearlong	Yearlong
29.0	Yes	Oct 15-Jun 30	Oct 15-Jun 30	Oct 15-Jun 30	Oct 15-Jun 30
50		Administrative	Administrative	Administrative	Administrative
Trail Travel Management Restriction Codes	Road Vehicle Travel Licensed	All Terrain Vehicle Travel Unlicensed	Trail Bike Travel Unlicensed	Jeep/4x4 Travel Unlicensed	Horse Travel Restrictions
1	Yearlong	Yearlong	Yearlong	Yearlong	
1.1	Yearlong	Yearlong	Yearlong	Yearlong	Yearlong
4	Yearlong	Yearlong	Oct 15-Dec 01	Yearlong	
5	Yearlong	Oct 15-Dec 01	Yearlong	Yearlong	
6	Yearlong	Oct 15-Jun 30	Oct 15-Jun 30	Yearlong	
7	Yearlong	No Restriction	No Restriction	Yearlong	
8	Yearlong	Yearlong	No Restriction	Yearlong	
11	Yearlong	Dec 01-Jun 30	Dec 01-Jun 30	Yearlong	
15	Yearlong	Yearlong	Oct 15-Jun 30	Yearlong	
20.9	No Restriction	No Restriction	No Restriction	No Restriction	
21.2	Yearlong	Sep 15-Jun 15	Sep 15-Jun 15	Yearlong	
21.9	Sep 01-Dec 01	Sep 01-Dec 01	Sep 01-Dec 01	Sep 01-Dec 01	
22.1	Yearlong	Sep 01-Jun 30	Sep 01-Jun 30	Yearlong	
22.4	Yearlong	Yearlong	Sep 01-Jun 30	Yearlong	
23.9	Oct 15-Dec 01	Oct 15-Dec 01	Oct 15-Dec 01	Oct 15-Dec 01	
24.1	Yearlong	Oct 15-May 15	Oct 15-May 15	Yearlong	
25.1	Yearlong	Dec 01-May 15	Dec 01-May 15	Yearlong	
25.9	Dec 01-May 15	Dec 01-May 15	Dec 01-May 15	Dec 01-May 15	
26.9	Dec 01-Jun 01	Dec 01-Jun 01	Dec 01-Jun 01	Dec 01-Jun 01	
28.1	Yearlong	May 01-Jun 15	May 01-Jun 15	Yearlong	
32.1	Yearlong	Yearlong	Dec 01-Jun 30	Yearlong	
39	Yearlong	Yearlong	Sep 01-Dec 01	Yearlong	
40	Yearlong	Sep 01-Dec 01	Sep 01-Dec 01	Yearlong	
44	Yearlong	Yearlong	Oct 15-Aug 15	Yearlong	
45	Yearlong	Yearlong	Sep 01-Jul 15	Yearlong	

Roads and trails that are not showing on map are eliminated or closed yearlong to all motorized travel.